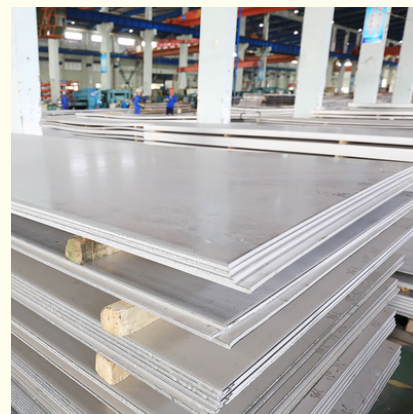




## 0.5 Mm 420 Stainless Steel Sheet Cold Rolled

### Basic Information

- Place of Origin: wuxi
- Brand Name: tai-steel
- Certification: ISO,SGS,BV,etc
- Model Number: TAI-3
- Minimum Order Quantity: 5-T
- Price: Negotiable
- Delivery Time: 15 working days

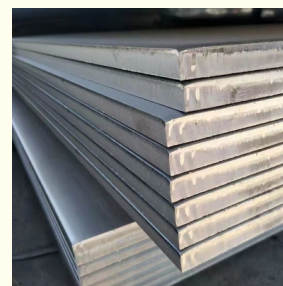
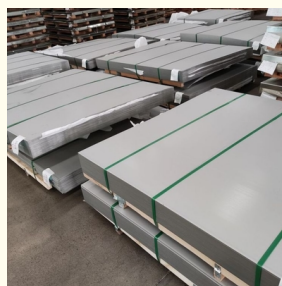


### Product Specification

- MOQ: 2 Ton
- Surface: 2B,BA,HL,NO.1,NO.4,8K,etc
- Material: Stainless Steel
- Edge: Mill,Slit,Round
- Package: Standard Export Seaworthy Package
- Shape: Sheet Plate
- Highlight: 420 stainless steel sheet 0.5 mm,  
420 stainless steel sheet cold rolled



### More Images



## Product Description

### Product Description:

Stainless Steel Sheet Plate is a product made of stainless steel material, which has excellent resistance to corrosion, heat, and high-temperature oxidation. It is widely used in many industries such as construction, decoration, machinery, and chemical engineering. It is strong, durable and has a smooth surface finish. Our Stainless Steel Sheet Plate is available in a variety of shapes such as sheet, plate, round, mill and slit edges for various applications. It is also offered in various grades such as 304, 316, 321, 310, etc. to meet your specific requirements. The price of the product is negotiable and we can supply up to 1000 tons per month. As a leading China sheet supplier, we provide cold rolled 304 stainless steel sheet, which has excellent formability, weldability, high corrosion resistance, and excellent toughness. Moreover, it has excellent performance in low temperature and high temperature.

### Features:

Product Name: Stainless Steel Sheet Plate

Delivery Time: 7-15 Days

Supply Ability: 1000 Ton/Tons Per Month

Price: Negotiable

Shape: Sheet Plate

Length: 1000-12000mm

Main Material: 304 stainless steel

Source: China Sheet Supplier

Wholesale: Stainless Steel Sheet Wholesalers

### Applications:

Tai-steel is a well-known China sheet supplier, providing high-quality stainless steel plate and sheet, including 410 stainless steel sheet, 304 stainless steel sheet, 304L stainless steel sheet, 316 stainless steel sheet, and 430 stainless steel sheet. All of these products are made of high-grade stainless steel and backed by strict ISO certification, SGS certification, and BV certification. Customers can purchase our sheet with a minimum order quantity of 5-T, and the price is negotiable. We guarantee a fast 7-15 days delivery time for our stainless steel sheet and plate. Our product comes with various edges, including Mill edge, Slit edge, and Round edge, to meet different needs.

### Technical Parameters:

Name	Value
Delivery Time	7-15 Days
Supply Ability	1000 Ton/Tons Per Month
Width	1000-3000mm
Length	1000-12000mm
Surface	2B,BA,HL,NO.1,NO.4,8K,etc
MOQ	2 Ton
Edge	Mill,Slit,Round
Payment	T/T,L/C,Western Union,etc
Material	Stainless Steel
Thickness	0.01-200mm
Keywords	Stainless Steel Sheet Wholesalers, 410 Stainless Steel Sheet, 410 Stainless Steel Sheet Suppliers

### Customization:

Looking for a reliable supplier for **stainless steel sheet plate**? Look no further than Tai-steel. We provide top-quality **410 stainless steel sheet** plate products with ISO9001 certification. Our 410 stainless steel sheet plates come in a variety of sizes and shapes, including sheet plates, with a width of 1000-3000 mm and an edge of mill, slit, or round. Our minimum order quantity is 2 tons and the price for our 410 stainless steel sheet plate starts at 2900\$. We offer fast delivery, with products arriving within 15 working days. As one of the leading **stainless steel sheet wholesalers**, tai-steel can provide 1000 tons of 410 stainless steel sheet plate per month.

### Support and Services:

Technical Support and Service for Stainless Steel Sheet Plate

We provide technical support and service for stainless steel sheet plate. Our team of certified technicians are available to help with any questions you may have about the stainless steel sheet plate. Our team is committed to providing you with the best customer service experience possible.

We provide installation and maintenance services for stainless steel sheet plate, as well as technical advice on how to use them correctly. We also provide repair and replacement services if needed. Our team is also available to provide assistance with troubleshooting any problems you may have with your stainless steel sheet plate.

Our team is dedicated to providing you with the highest quality service and support for your stainless steel sheet plate. We are here to ensure that you get the most out of your investment. Contact us today for more information on our technical support and service for stainless steel sheet plate.

### Packing and Shipping:

Packaging and Shipping of Stainless Steel Sheet Plate:

The stainless steel sheet plate will be carefully packed in bubble wrap, cardboard boxes or wooden crates to protect it from damage during shipment. The shipment will usually be done by air freight or sea freight. The delivery time depends on the destination and the shipping method.



**Wuxi TAIDING Stainless Steel Co., Ltd.**



+86 15850543668



vincentfang@taidingss.com



stainless-steelsheetcoil.com

28 Nongshi Road, Xishan District, Wuxi City, Jiangsu Province, China